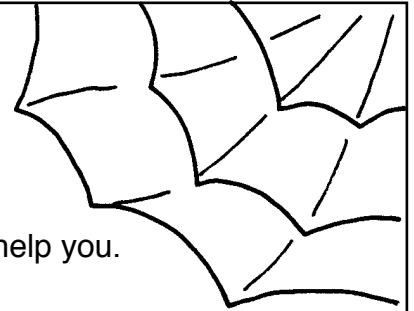
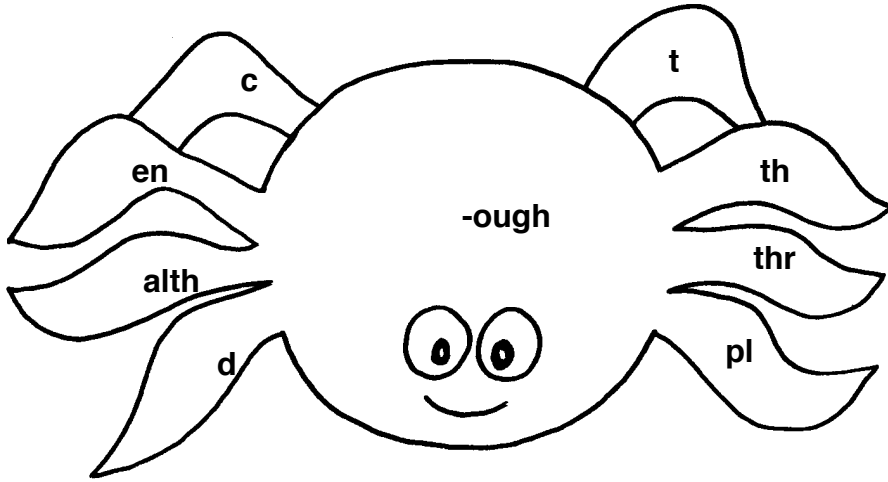


# Spiders



## Letter strings

Find eight words with an **-ough** letter string, using the spider to help you.




---

---

---

---

---

---

---

---

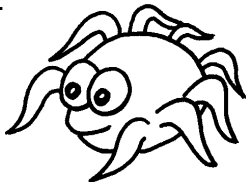
## its or it's

Belonging to it = **its**

For example: the dog chased its tail.

A short way of writing **it is** = **it's**

For example: It's Thursday tomorrow.



Read the sentences about the spider and fill in **its** or **it's**.

\_\_\_\_\_ scary.

\_\_\_\_\_ legs are hairy.

\_\_\_\_\_ hanging from the ceiling.

Where are \_\_\_\_\_ ears?

\_\_\_\_\_ as black as coal.

When \_\_\_\_\_ scared, it runs away.

\_\_\_\_\_ web is shiny.

## EXTRA!

Use the clues in each spider to unscramble the eight letters and form a word.

