

You need: filter paper, brown marker pen, a beaker and a stopwatch.

## Activity

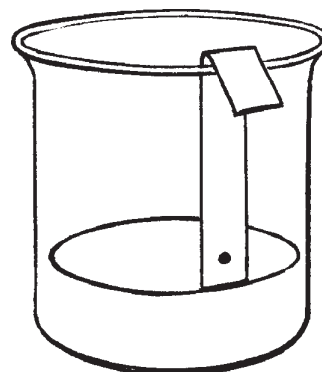
Some mixtures can be separated by chromatography.

- ◆ Cut out a strip of filter paper about 1 cm wide and 10 cm long.
- ◆ Make a large ink spot near the bottom of the paper with a brown marker.



- ◆ Put a little water in a beaker.
- ◆ Hang the filter paper over the edge of the beaker so that the edge near the dot is touching the water.
- ◆ Leave it for 10 minutes.

Make sure the edge of the paper nearest the ink spot just touches the water.



## Answer

What happens to the ink spot?