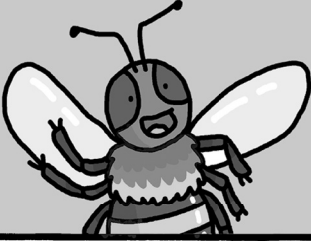


A DAY IN
THE LIFE
OF A ...

BEE

by Mike Barfield and Jess Bradley

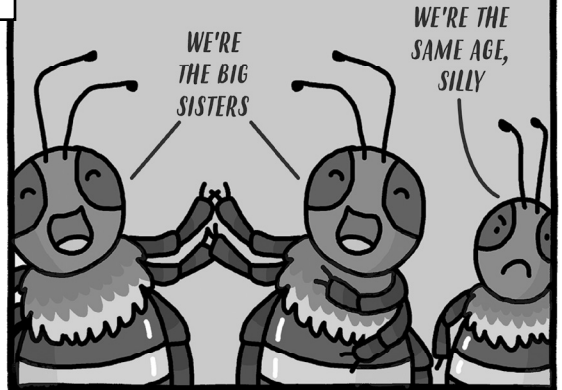
Welcome to the hive.
I'm a western honey bee.
This place is buzzin'.



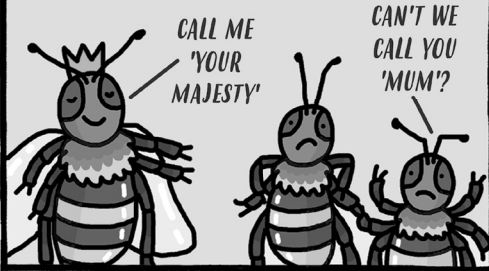
I'm a worker bee, one of
those that fetch all the
pollen and nectar from
flowers to make honey.



There are thousands of us workers,
working hard for the hive all day long.
We're all females, AND sisters.



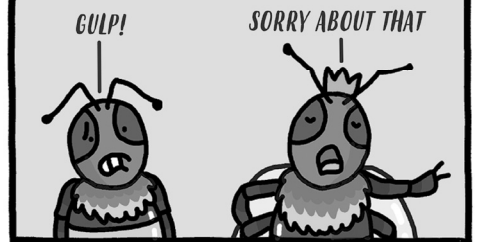
We each hatched from eggs laid by
our queen, the leader of the hive.



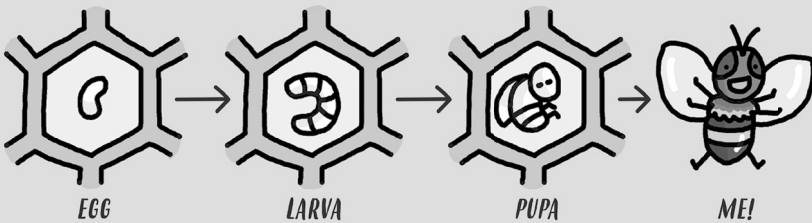
And there's also a small
number of male bees,
known as drones.



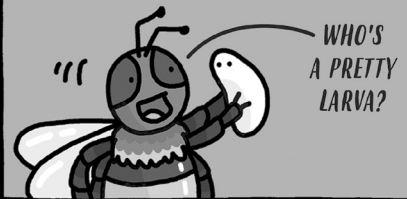
But their only job is to
mate with the queen,
after which they die.



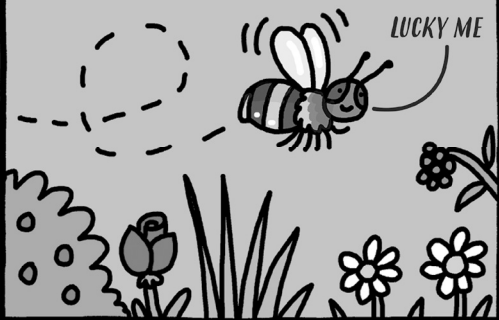
After mating, her royal honeyiness lays eggs in the
nest's honeycomb cells. That's how I was born.



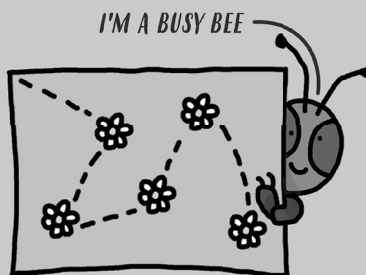
My first job was cleaning
the hive, making honey and
looking after the larvae.



Until finally, I got to fly
outside and visit some flowers.



I can fly up to 800 km
and visit thousands of
flowers in my lifetime.



But it's raining today, so
I'm staying in to put my
feet up. See you around.



Vocabulary

A Day in the Life of a Bee

1. *“Welcome to the hive. I’m a western honey bee. This place is buzzin’!”*

What does the word **buzzin’** tell you about the hive?

2. Look at the second box.

Find and copy one word that means the same as **collect**.

3. *“After mating, her royal honeyness lays eggs in the nest’s honeycomb cells.”*

Draw a line to match **honeyness** to the word it is meant to sound like.

honeyness

happiness

honeycomb

highness

4. What does the phrase **her royal honeyness** tell you about the queen?

Tick one:

She is just like the other bees.	
She is a worker bee.	
She likes to eat honey.	
She is a very important bee.	

5. **Circle the word** for the baby bee that comes out of the egg.

queen	larva	worker	sister
-------	-------	--------	--------

Retrieval

A Day in the Life of a Bee

1. What type of bee is this text about?

2. How many worker bees are there in the hive?

Tick one:

hundreds	<input type="checkbox"/>
a small number	<input type="checkbox"/>
thousands	<input type="checkbox"/>

3. Draw lines to match each type of bee to two facts.

worker bee
drone bee

male
female
makes the honey
mates with the queen

4. What shape are the honeycomb cells where the eggs are laid?

Tick one:

circular	<input type="checkbox"/>
square	<input type="checkbox"/>
hexagonal	<input type="checkbox"/>

5. Fill in the blanks:

A honey bee can fly up to _____ km and visit
_____ of flowers in their lifetime.

Inference

A Day in the Life of a Bee

1. Why do the worker bees want to call the queen bee, "Mum"?

2. How does the worker bee feel about going outside to visit some flowers?

How do you know?

3. Why does the bee stay inside when it's raining?




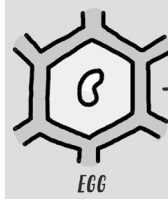
4. Put a **tick** in the correct box to show whether each sentence is **true** or **false**.

	True	False
Drone bees live for a long time.		
Worker bees have a lot of different jobs in the hive.		
Bees are very lazy.		

Sequence of Events

A Day in the Life of a Bee

1. Number the bee stages from 1 to 4 to show the correct order.

 <p>ME!</p>	 <p>LARVA</p>	 <p>PUPA</p>	 <p>EGG</p>

Prediction

A Day in the Life of a Bee

1. What will the bee do when it stops raining?

2. If you were a bee, would you rather be a queen bee, a worker bee or a drone bee?

Explain your choice.

I would like to be a _____ bee because
